

### Materials and Supplies:

wool felt  
needle and thread  
buttons or snaps  
trim, rick rack, or ribbon (optional)

Beginner sewing level.  
Basic hand stitching.



### Sew Your Own Little Doll Houses

Begin by cutting all of the pattern pieces out from some good quality wool or blend felt.

Pin all like pieces together (sides pinned with sides, back pinned to back, etc.) to create double layer pieces. Use a simple running stitch to hold the pieces together.

Once the double layers have been sewn, pin the sides to the Back of House piece. Next pin the Bottom in place onto the sides and back.



Continued from page 1...

Sew the sides and bottom pieces together and onto the back of the house piece. I like to use a basic blanket style stitch, running the thread through both all layers.



Pin the front of house piece on, matching at the very top front corners. Sew the front of the house in place (top front).

Sew the roof in place. I like to pin the roof in place first by matching the very back edges and centering the roof over the arch. Sew with a blind stitch with a matching thread to keep the roof in place.

Match the extra door flap to the inside of the front of the house. Pin the flap in place and sew onto the inside left side of the house. Do make sure that the door will hang just right when sewn into place. Sew on a button doorknob.

Match the small door flap to the right side of the house so that it will fall in place right over the doorknob button. Pin and sew in place on the outside right of the house. Make a small slit in the felt so that the door can be buttoned shut.

You can alternately choose to sew some trim onto the upper edge of the roof, or even add some applique and embroidery to the outside of the house. These tiny houses are the perfect size for my mini 4" felt dolls to live in.



Back of House  
cut 2



Top Front  
cut 2



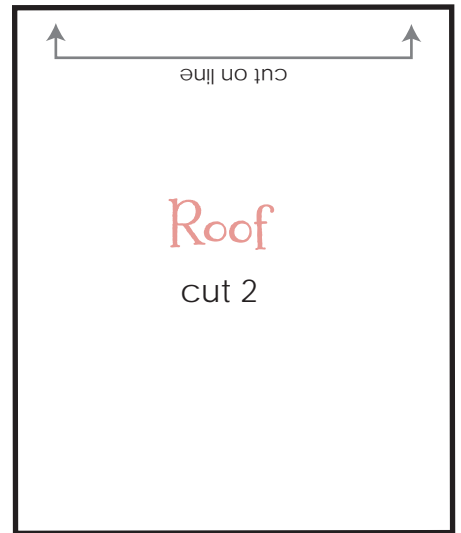
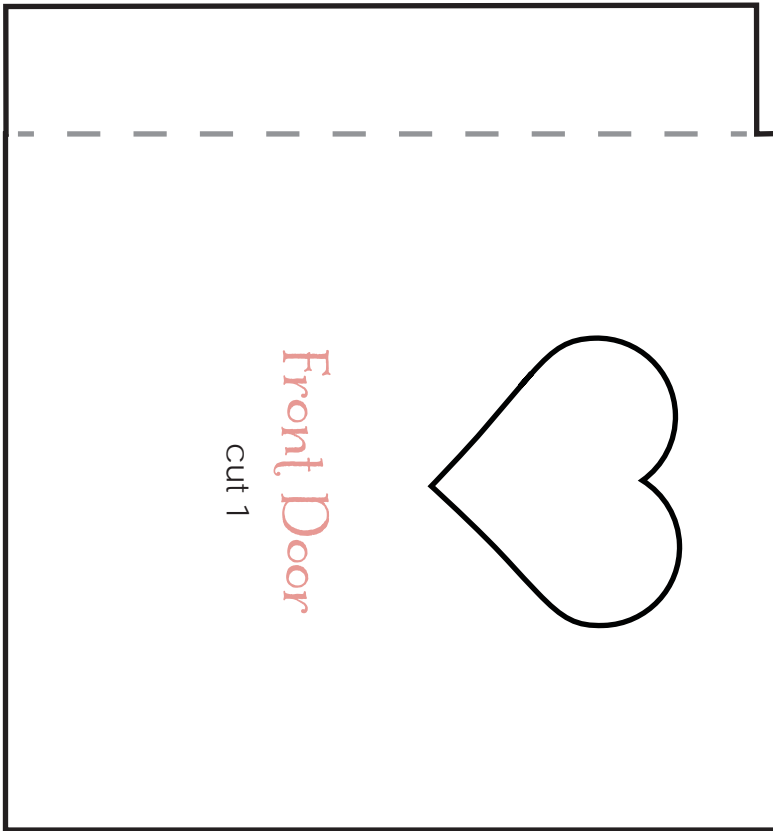
Sides  
cut 4



Bottom  
cut 2

ALL RIGHTS RESERVED. No portion of this pattern may be photocopied or reproduced by any means without the express written consent of Delilah Iris Designs. Your purchase of this pattern or tutorial is a license for personal use. Copyright to all pattern pieces, photos, and instructional material remains with Delilah Iris Designs. Delilah Iris Designs cannot be held responsible for human error, printing errors or individual workmanship. All patterns and tutorials are protected herein by copyright and may not be produced for any commercial resale or mass production. Items made with Delilah Iris Designs patterns and tutorials may be produced from a home based setting and sold on a small scale basis (less than 250 per year total of all designs).

Should you choose to sell the physical goods credit is required to Delilah Iris Designs in your listing as well as a link to the pattern at [dellahiris.com](http://dellahiris.com).



Pssst!... You can just cut 2 of this one...  
And then trim on the dotted line on one piece, so it looks like that one  
Cut the door heart out and use a running stitch around the outside of the heart.